

- Read this document and the instruction manual to ensure that work is performed correctly and safely.
- This product's instruction manual can be downloaded from the Sansha Electric website.



<https://www.sansha.co.jp/products/download.html>

- In order to prevent injury to the worker or other persons, and to prevent damage to property, the following label categories and symbols are used to explain the items that must be observed.

Explanation of label categories

⚠ WARNING

This indicates information that involves the risk of death or serious injury.

⚠ CAUTION

This indicates information that involves the risk of injury or property damage.

Explanation of symbols

This is an item that must be carried out.

This is an item that is prohibited.

SANSHA ELECTRIC MFG. CO., LTD.

Head Office Tel +81-6-6325-0500
3-1-56 Nishiawaji, Higashiyodogawa-ku, Osaka, Japan

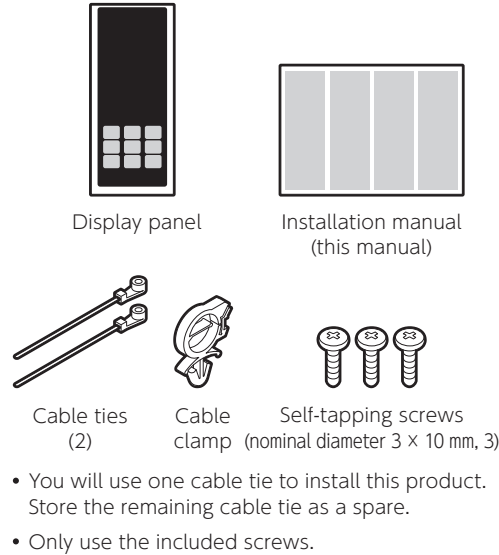
Safety Precautions

⚠ WARNING

Required

- Before installing this product, turn OFF the input power supply of the distribution panel and check that the power supply is OFF.

Checking the Package Contents



Panel Cable

To use this product, you will require a panel cable, which is sold separately. Prepare one of the following panel cables.

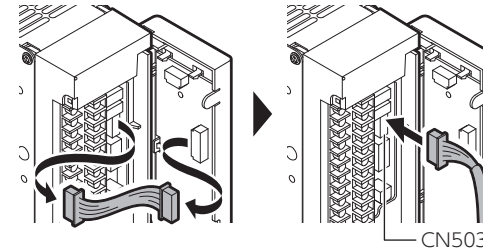
Cable length	Name
1 meter	UG-PANELCABLE (1M)
3 meters	UG-PANELCABLE (3M)
5 meters	UG-PANELCABLE (5M)

Using This Product with Other Optional Products

- Install the optional products in the following order.
- ① Conversion board
 - ② Communication board
 - ③ Display panel

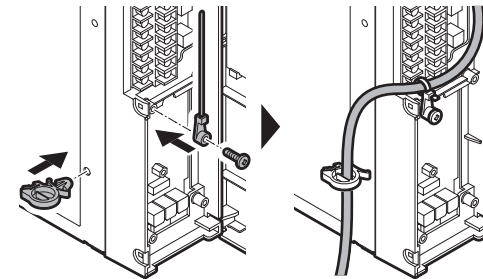
Installing the Product

- 1 Remove the cable from the UG unit.
- 2 Connect the panel cable.
 - Connect the connector that does not have a ground line.

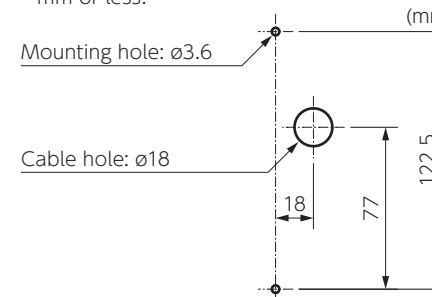


- 3 Use a self-tapping screw to attach the cable tie.
 - When attaching the communication board, screw the cable tie and the communication board together. Use one of the self-tapping screws (nominal diameter 3 x 10 mm) included with this product.

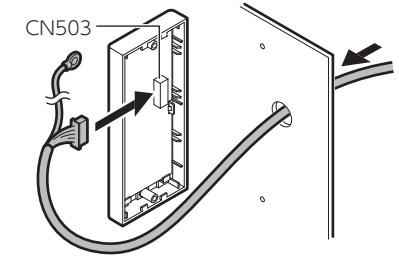
- 4 Attach the cable clamp.
- 5 Wire the panel cable, and then secure it with the cable tie.



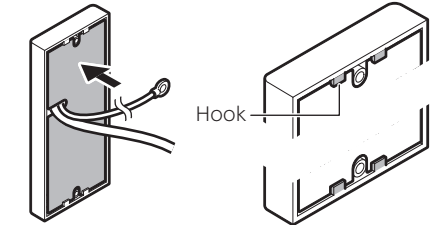
- 6 Drill mounting holes and a cable hole in the location where you will attach the display panel.
 - Select locations with a plate thickness of 3 mm or less.



- 7 Pass the panel cable through the cable hole from the back of the display panel mounting surface.
- 8 Remove the cover from the display panel.
- 9 Connect the panel cable.



- 10 Attach the removed cover to the display panel.
 - Pass the panel cable through the notch on the cover.
 - Attach the cover by catching it on the (four) hooks on the display panel.



- 11 Pass the ground line through the cable hole.
 - Be sure to ground the ground line.
- 12 Align the display panel with the mounting holes, and then use the self-tapping screws to attach this panel.

