

### Stock and shareholder data (as of March 31, 2023)

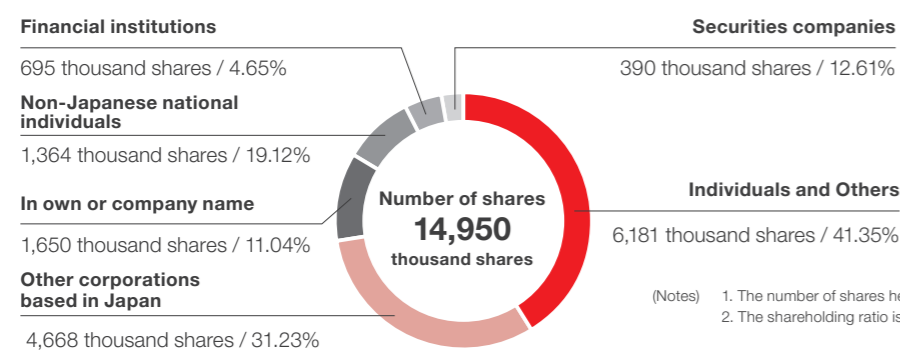
<b>Stock exchange listing</b>	Tokyo Stock Exchange Standard Market (securities code 6882)
<b>Administrator of shareholders' register</b>	Sumitomo Mitsui Trust Bank, Ltd
<b>Number of shares issued</b>	14,950,000
<b>Number of shareholders</b>	7,638

### Major shareholders (ten largest shareholders)

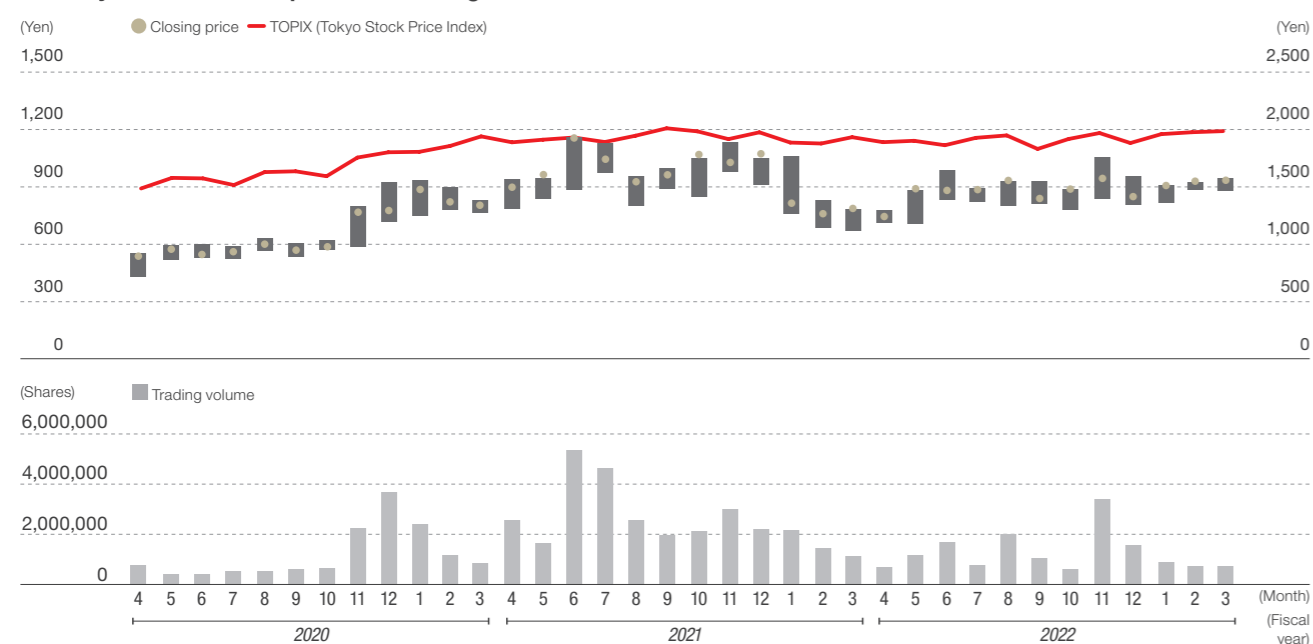
Name	Number of shares held (unit: thousands)	Shareholding ratio (%)
Mitsubishi Heavy Industries, Ltd.	1,335	10.04
Panasonic Holdings Corporation	1,213	9.12
Miyashiro Limited Liability Company	758	5.70
Nitto Kogyo Corporation	667	5.02
Employee Shareholding Association of Sansha Electric Manufacturing	378	2.85
Kunio Shikata	330	2.48
The Senshu Ikeda Bank, Ltd.	314	2.36
Sumitomo Mitsui Banking Corporation	280	2.11
Hideo Shikata	228	1.72
Yukiya Morita	220	1.65

(Notes) 1. The number of shares held is rounded down to the nearest thousand.  
 2. Sansha Electric Manufacturing Co., Ltd. owns 1,650,022 treasury shares, but excluded itself from the list of major shareholders.  
 3. The shareholding ratio is calculated disregarding treasury shares and rounding to three decimal places.

### Distribution by type of shareholders



### Monthly trends in share price and trading volume



### Company outline (as of March 31, 2023)

<b>Company name</b>	Sansha Electric Manufacturing Co., Ltd.
<b>Date of foundation</b>	March 8, 1933
<b>Data of incorporation</b>	April 28, 1948
<b>Headquarters location</b>	3-1-56, Nishiawaji, Higashiyodogawa-ku, Osaka 533-0031 Japan
<b>Capital</b>	2.7 billion yen
<b>Number of employees (consolidated)</b>	1,465 (912 in Japan, 553 overseas)
<b>Branches, sales offices and other offices</b>	Tokyo, Aichi, Fukuoka, Ishikawa, Finland, South Korea and Taiwan
<b>Plants and laboratories</b>	Osaka, Shiga and Okayama
<b>Consolidated subsidiaries</b>	<p><b>Japan</b></p> <p>SANSHA SOLUTION SERVICE CO., LTD. (Osaka)                      SUWA SANSHA ELECTRIC CO., LTD. (Nagano Prefecture)                      OSAKA DENSO INDUSTRY CO., LTD. (Osaka)</p> <p><b>Overseas</b></p> <p>SANREX CORPORATION (USA)                      SANREX ASIA PACIFIC PTE. LTD. (Singapore)                      SANREX LIMITED (Hong Kong)                      SANSHA ELECTRIC MFG. (SHANGHAI) CO., LTD. (China)                      SANSHA ELECTRIC MFG. (GUANGDONG) CO., LTD. (China)                      DONGGUAN EASTERN ELECTRONICS CO., LTD. (China)</p>

<b>Scope of reporting</b>	Sansha Electric Manufacturing Co., Ltd. and its nine consolidated subsidiaries. However, the applicable scope of reporting is specified on a case-by-case basis if it differs from the above.
<b>Period covered</b>	Fiscal year 2022 (from April 1, 2022 to March 31, 2023)
<b>Contact for inquiries</b>	Public Relations Department Phone: +81-6-6321-0321 (switchboard number) sanrex-ir@sansha.co.jp
<b>Disclaimer</b>	This report contains plans, strategies and forward looking statements such as financial outlooks. They are based on the information available at the time of publication and on certain assumptions that are deemed reasonable. Please note that results may differ from these statements due to a variety of factors.

