

Stock and shareholder data (as of March 31, 2024)

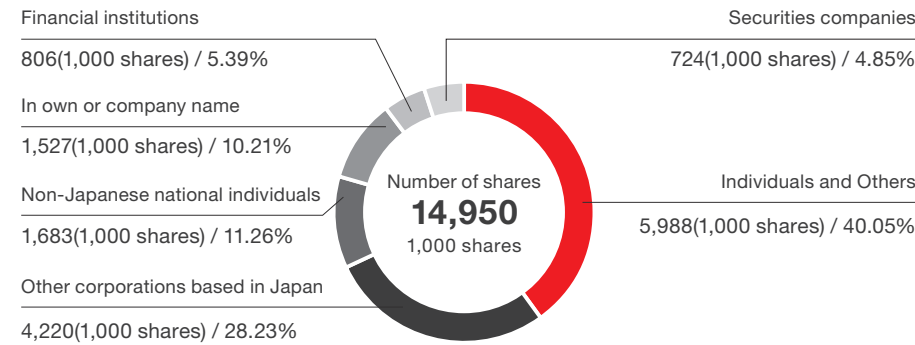
Stock exchange listing	Tokyo Stock Exchange Standard Market (securities code 6882)
Administrator of shareholders' register	Sumitomo Mitsui Trust Bank, Limited
Number of shares issued	14,950,000 shares
Number of shareholders	11,030

Major shareholders (ten largest shareholders)

Name	Number of shares held (1,000 shares)	Shareholding ratio (%)
Mitsubishi Heavy Industries, Ltd.	1,335	9.95
Panasonic Holdings Corporation	807	6.02
Miyashiro Limited Liability Company	758	5.65
Nitto Kogyo Corporation	667	4.97
Employee Shareholding Association of Sansha Electric Manufacturing	381	2.84
Kunio Shikata	330	2.46
The Senshu Ikeda Bank, Ltd.	314	2.34
Sumitomo Mitsui Banking Corporation	280	2.09
BNYM SA/NV FOR BNYM FOR BNYM GCM CLIENT ACCTS M ILM FE	229	1.71
Hideo Shikata	228	1.70

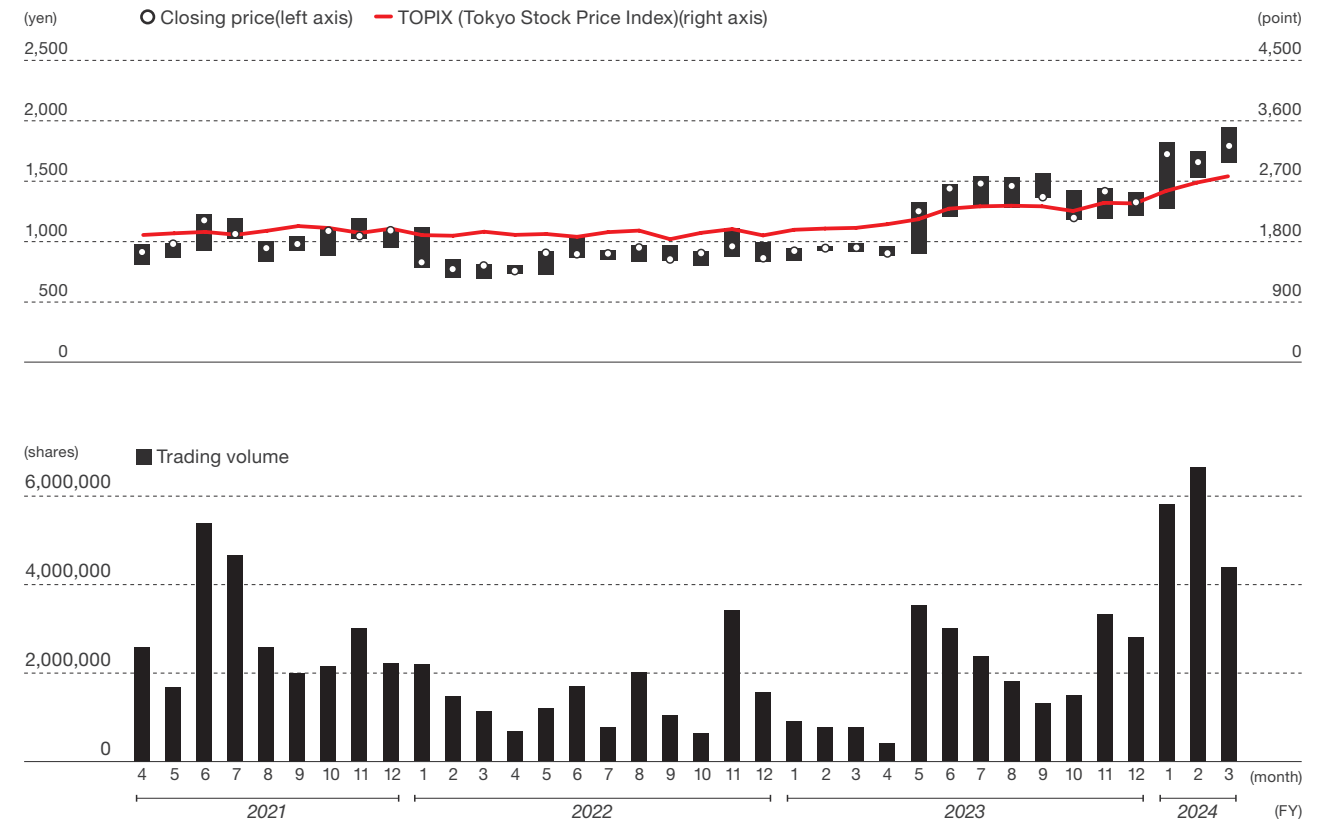
(Notes) 1. The number of shares held is rounded down to the nearest thousand.
 2. Sansha Electric Manufacturing Co., Ltd. owns 1,527,022 treasury shares, but excluded itself from the list of major shareholders.
 3. The shareholding ratio is calculated disregarding treasury shares and rounding to three decimal places.

Share Distribution by Shareholder Type



(Notes) 1. The number of shares held is rounded down to the nearest thousand.
 2. The shareholding ratio is rounding to three decimal places.

Monthly trends in share price and trading volume



Company outline (as of March 31, 2024)

Company name	Sansha Electric Manufacturing Co., Ltd.	Scope of reporting	Sansha Electric Manufacturing Co., Ltd. and its nine consolidated subsidiaries. However, the applicable scope of reporting is specified on a case-by-case basis if it differs from the above.
Date of foundation	March 8, 1933	Period covered	Fiscal year 2023 (from April 1, 2023 to March 31, 2024) (Some of the initiatives include the most recent)
Data of incorporation	April 28, 1948	Contact for inquiries	Public Relations Department Phone: +81-6-6321-0321 (switchboard number) sanrex-ir@sansha.co.jp
Headquarters location	3-1-56, Nishiawaji, Higashiyodogawa-ku, Osaka 533-0031 Japan	Disclaimer	This report contains plans, strategies and forward looking statements such as financial outlooks. They are based on the information available at the time of publication and on certain assumptions that are deemed reasonable. Please note that results may differ from these statements due to a variety of factors.
Capital	2.7 billion yen		
Number of employees (consolidated)	1,418 (943 in Japan, 475 overseas)		
Branches, sales offices and other offices	Tokyo, Aichi, Fukuoka, Ishikawa, Finland, South Korea and Taiwan		
Plants and laboratories	Osaka, Shiga and Okayama		
Consolidated subsidiaries	Japan SANSHA SOLUTION SERVICE CO., LTD. (Osaka) SUWA SANSHA ELECTRIC CO., LTD. (Nagano Prefecture) OSAKA DENSO INDUSTRY CO., LTD. (Osaka) Overseas SANREX CORPORATION (USA) SANREX ASIA PACIFIC PTE. LTD. (Singapore) SANREX LIMITED (Hong Kong) SANSHA ELECTRIC MFG. (SHANGHAI) CO., LTD. (China) SANSHA ELECTRIC MFG. (GUANGDONG) CO., LTD. (China) DONGGUAN EASTERN ELECTRONICS CO., LTD. (China)		